



Body Size

3/8" up to 1 1/4"

Screw-to-Connect

FHP-Series



#### Technical Description

Screw-to-connect type of couplings for difficult applications. Working pressure up to 550 bar. Flat face valves to avoid fluid loss and protect environment.

#### Advantages

- No fluid loss during connection/disconnection
- Good resistance to vibrations and mechanical stresses due to screw connection and internal construction

- Connectable under residual pressure up to 250 bar
- Safety locking feature to avoid accidental disconnection

#### Applications

- Mobile and construction equipment: cranes, drilling machines, excavators, hammers, thumbs
- Oil field: wellhead drives

#### Working Pressure

See charts.

#### Working Temperature

-20°C up to +100°C (NBR)

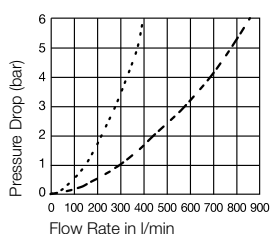
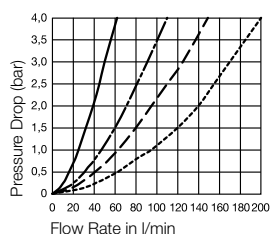
#### Max. Residual Pressure

Body Size	during connection
3/8"	250 bar
1/2"	250 bar
5/8"	250 bar
3/4"	250 bar
1"	250 bar
1 1/4"	250 bar

Material Coupling	Steel
Coupling Body	Steel
Sleeve	Steel
Valve	Steel
Springs	Stainless steel
Locking Balls	Steel
Seals	NBR

Material Plug	Steel
Plug Body	Steel
Valve	Steel
Springs	Stainless steel
Seals	NBR
Valve Holder	Stainless steel

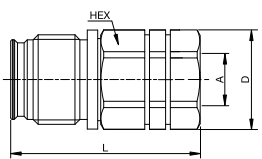
#### Flow Capacity with Oil with Viscosity of 32cSt at 40°C as per ISO 7241/2-2000



- Body Size 3/8"
- - - Body Size 1/2"
- - - Body Size 5/8"
- ..... Body Size 3/4"
- ..... Body Size 1"
- - - Body Size 1 1/4"

## Couplings

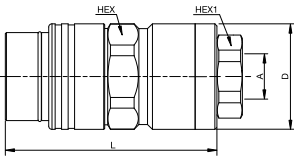
## FHP-Series

	Body Size	Connection A	HEX mm	HEX 1 mm	L mm	D mm	Weight gr.	Max. Operating Pressure in bar*	Part Number
 <p>Female Thread - BSPP</p>	3/8"	3/8"	30		64,5	32	234	550	FHP-371-6FB
	1/2"	1/2"	36		76,0	40	440	550	FHP-501-8FB
	5/8"	3/4"	41		83,5	45	580	550	FHP-621-12FB
	3/4"	1"	46		98,0	50	955	500	FHP-751-16FB
	1"	1 1/4"	55		105,0	60	1395	470	FHP-1001-20FB
	1 1/4"	1 1/2"	65		132,5	85	2930	400	FHP-1251-24FB

\* Max. service pressure connected

## Plugs

## FHP-Series

	Body Size	Connection A	HEX mm	HEX 1 mm	L mm	D mm	Weight gr.	Max. Operating Pressure in bar*	Part Number
 <p>Female Thread - BSPP</p>	3/8"	3/8"	38	27	94,5	42	592	550	FHP-372-6FB
	1/2"	1/2"	45	36	110,0	49	945	550	FHP-502-8FB
	5/8"	3/4"	48	36	110,0	52	1045	550	FHP-622-12FB
	3/4"	1"	55	46	127,0	60	1585	500	FHP-752-16FB
	1"	1 1/4"	70	55	137,0	76	2510	470	FHP-1002-20FB
	1 1/4"	1 1/2"	85	65	174,7	85	5120	400	FHP-1252-24FB

\* Max. service pressure connected

## Dust Protection

## FHP-Series

	Body Size	Version	Material	Part Number
	3/8"	for coupling	Aluminium	FHP-371-DC
	1/2"	for coupling	Aluminium	FHP-501-DC
	5/8"	for coupling	Aluminium	FHP-621-DC
	3/4"	for coupling	Aluminium	FHP-751-DC
	1"	for coupling	Aluminium	FHP-1001-DC
	1 1/4"	for coupling	Aluminium	FHP-1251-DC
	3/8"	for plug	Aluminium	FHP-371-DP
	1/2"	for plug	Aluminium	FHP-501-DP
	5/8"	for plug	Aluminium	FHP-621-DP
	3/4"	for plug	Aluminium	FHP-751-DP
	1"	for plug	Aluminium	FHP-1001-DP
	1 1/4"	for plug	Aluminium	FHP-1251-DP

⚠ Please consider our security advices on the pages 12/13 ⚠