

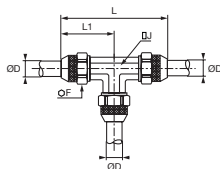
PL Tube-to-Tube and Complementary Fittings

JBPL

Equal Tee



Nickel-plated brass



| ØD | | F | J | L | L1 | kg |
|--------|----------------------------|----|----|----|----|-------|
| 2.7x4 | JBPL2.7/4 | 8 | 8 | 44 | 22 | 0.024 |
| 4x6 | JBPL4/6 | 11 | 8 | 48 | 24 | 0.042 |
| 6x8 | JBPL6/8 | 13 | 10 | 50 | 25 | 0.045 |
| 7.5x10 | JBPL7.5/10 | 16 | 12 | 56 | 28 | 0.086 |
| 8x10 | JBPL8/10 | 16 | 12 | 56 | 28 | 0.085 |
| 10x12 | JBPL10/12 | 17 | 14 | 64 | 32 | 0.100 |
| 11x14 | JBPL11/14 | 22 | 16 | 68 | 34 | 0.168 |

PL Nickel-Plated Brass Spigot Fittings

This range of Parker Legris has a sealing system which guarantees **excellent sealing and full flow**. PL fittings for flexible tubing are **fully re-usable**. They provide excellent compatibility with a wide variety of fluids.

Product Advantages

Rapid Assembly

Nut design allows hand tightening with soft tubing (PU, PE etc.)
Quick to assemble and disassemble
Compatible with all flexible tubes of hardness up to 90 shore A (polyurethane, polyamide, polyethylene, fluoropolymers, etc.)
Mechanical stop on the body to prevent overtightening

Performance

Special spigot design ensures full flow and excellent tensile performance
Reliable direct sealing system without the use of a seal or olive
Low and medium pressure
Nickel-plated for increased corrosion resistance



Food Process
Painting
Pneumatic Systems
Chemical
Welding
Laboratories
Railway

Applications

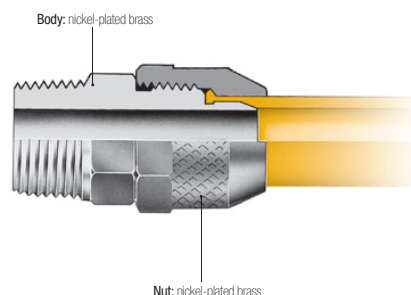
Technical Characteristics

| | |
|---------------------|--|
| Compatible Fluids | Compressed air Other fluids: contact us |
| Working Pressure | Vacuum to 40 bar |
| Working Temperature | -40°C to +100°C |

| | | | | | | | | |
|---|-----|-------|-----|-----|--------|------|-------|-------|
| Tensile Performance (polyamide tubing) | Ø | 2.7/4 | 4/6 | 6/8 | 7.5/10 | 8/10 | 10/12 | 11/14 |
| | daN | 11 | 41 | 52 | 88 | 67 | 79 | 149 |

Reliable performance is dependent upon the type of fluid conveyed, component materials and tubing being used.
Guaranteed for use with a vacuum of 755 mm Hg (99% vacuum).

Component Materials



Silicone-free

Installation

Cutting the Tube



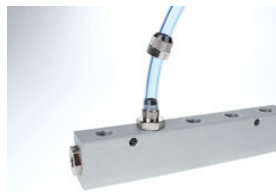
Cut the polymer tube square.

Preparing the Connection



Slide the nut onto the tube.

Connecting the Tube



Push the tube home into the body of the fitting.

Final Assembly



Tighten the nut by hand (in the case of soft tubing) or using a spanner (for semi-rigid tubing) until it comes into contact with the end stop.