





# Stud Fittings



## CBPL Stud Elbow, Male NPT Thread

	Nickel-plated brass									
	ØD	C		F	H	J	L	kg		
	2.7x4	NPT1/8		8	18	8	22	0.019		
	4x6	NPT1/8		11	18	8	24	0.023		
	4x6	NPT1/4		11	23	10	25	0.036		
	6x8	NPT1/8		13	19	10	25	0.027		
	6x8	NPT1/4		13	23	10	25	0.034		
	8x10	NPT1/4		16	24	12	28	0.058		
	8x10	NPT3/8		16	25	12	28	0.059		
	10x12	NPT3/8		17	27	14	32	0.051		

## C3BPL Stud Elbow, Male BSPT Thread



	Nickel-plated brass									
	ØD	C		F	H	J	L	kg		
	2.7x4	R1/8		8	17	8	22	0.018		
	4x6	R1/8		11	17	8	24	0.022		
	4x6	R1/4		11	21.5	10	25	0.031		
	6x8	R1/8		13	18	10	25	0.025		
	6x8	R1/4		13	21.5	10	25	0.031		
	6x8	R3/8		13	23.1	12	27	0.050		
	7.5x10	R1/4		16	22.5	12	28	0.057		
	7.5x10	R3/8		16	23.1	12	28	0.058		
	8x10	R1/4		16	21.5	12	28	0.057		
	8x10	R3/8		16	23.1	12	28	0.058		
	10x12	R3/8		17	25.1	14	32	0.052		
	11x14	R3/8		22	25.1	16	34	0.094		

## C4BPL Stud Elbow, Male BSPP Thread

	Nickel-plated brass, NBR									
	ØD	C		E	F	F1	H	J	L	kg
	6x8	G1/4		7	13	13	27	12	27	0.063

These fittings are supplied with nitrile seals.

## C8BPL Stud Elbow, Male Metric Straight Thread

	Nickel-plated brass, NBR									
	ØD	C		E	F	F1	H	J	L	kg
	6x8	M10x1		7	14	13	27.25	10	21.5	0.031
	6x8	M12x1		7	13	13	26	12	25	0.063

These fittings are supplied with nitrile seals.

# PL Nickel-Plated Brass Spigot Fittings

This range of Parker Legris has a sealing system which guarantees **excellent sealing and full flow**. PL fittings for flexible tubing are **fully re-usable**. They provide excellent compatibility with a wide variety of fluids.

## Product Advantages

### Rapid Assembly

- Nut design allows hand tightening with soft tubing (PU, PE etc.)
- Quick to assemble and disassemble
- Compatible with all flexible tubes of hardness up to 90 shore A (polyurethane, polyamide, polyethylene, fluoropolymers, etc.)
- Mechanical stop on the body to prevent overtightening

### Performance

- Special spigot design ensures full flow and excellent tensile performance
- Reliable direct sealing system without the use of a seal or olive
- Low and medium pressure
- Nickel-plated for increased corrosion resistance



Food Process  
Painting  
Pneumatic Systems  
Chemical  
Welding  
Laboratories  
Railway

### Applications

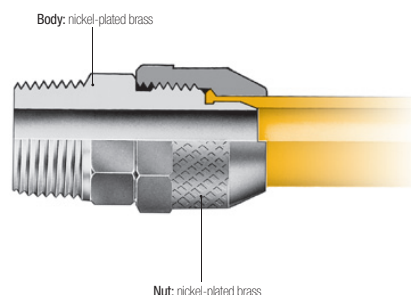
## Technical Characteristics

Compatible Fluids	Compressed air Other fluids: contact us
Working Pressure	Vacuum to 40 bar
Working Temperature	-40°C to +100°C

Tensile Performance (polyamide tubing)	Ø	2.7/4	4/6	6/8	7.5/10	8/10	10/12	11/14
	daN	11	41	52	88	67	79	149

Reliable performance is dependent upon the type of fluid conveyed, component materials and tubing being used.  
Guaranteed for use with a vacuum of 755 mm Hg (99% vacuum).

### Component Materials



Silicone-free

## Installation

### Cutting the Tube



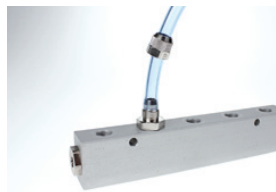
Cut the polymer tube square.

### Preparing the Connection



Slide the nut onto the tube.

### Connecting the Tube



Push the tube home into the body of the fitting.

### Final Assembly



Tighten the nut by hand (in the case of soft tubing) or using a spanner (for semi-rigid tubing) until it comes into contact with the end stop.