

PDE2600PNUK

Parker Pneumatic
P3S - Air Preparation System

- Port size G¹/₄ - G³/₈
- Modular air preparation series
- Robust and lightweight zinc body construction
- Rolling diaphragm for extended life
- Soft start valve for slow pressure build up in pneumatic circuits
- Dump valves for quick downstream pressure exhaust
- Tamperproof regulator options available
- Secondary pressure ranges 4, 8 and 16 bar



Operating information

| | |
|--|----------------|
| Working pressure: | Max 16 bar |
| Working temperature: | 0 °C to +50 °C |
| * Low temperature capabilities -40°C for Filters, Filter/Regulators and Regulators on request. | |

Flow characteristics

| Flow m ³ /h | 1/4 | 3/8 |
|---------------------------------|-----|-----|
| Filter + Regulator + Lubricator | 50 | 47 |
| Filter-Regulator + Lubricator | 53 | 47 |
| Filter-Water-Separator | 86 | 91 |
| Dust Filter | 80 | 97 |
| Coalescing Filter | 35 | 35 |
| Adsorber Filter | 35 | 35 |
| Regulator | 171 | 198 |
| Filter Regulator | 137 | 192 |
| Lubricator | 110 | 113 |

Filters

5 micron (40 micron options available)

| Port size | Description | Order Code |
|-----------|--|--------------------|
| G1/4 | Standard with 5μ element | P3SFA12EPPN |
| G1/4 | Semi auto drain 5μ element | P3SFA12EPSN |
| G1/4 | Auto drain 5μ element | P3SFA12EPAN |
| G1/4 | Metal bowl with sight glass 5μ element | P3SFA12ESPN |
| G3/8 | Standard with 5μ element | P3SFA13EPPN |
| G3/8 | Semi auto drain 5μ element | P3SFA13EPSN |
| G3/8 | Auto drain 5μ element | P3SFA13EPAN |
| G3/8 | Metal bowl with sight glass 5μ element | P3SFA13ESPN |

Regulators

4, 8 & 16 bar (non relieving options available)

| Port size | Description | Order Code |
|-----------|---------------------------|--------------------|
| G1/4 | Standard 8 bar | P3SRA12BNNP |
| G1/4 | Standard 8 bar with Gauge | P3SRA12BNGP |
| G1/4 | With adaptor for key lock | P3SRA12BANP |
| G1/4 | With common p1 supply | P3SHA12BNNP |
| G1/4 | Pilot operated | P3SRA12BPPP |
| G3/8 | Standard 8 bar | P3SRA13BNNP |
| G3/8 | Standard 8 bar with Gauge | P3SRA13BNGP |
| G3/8 | With adaptor for key lock | P3SRA13BANP |
| G3/8 | With common p1 supply | P3SHA13BNNP |
| G3/8 | Pilot operated | P3SRA13BPPP |

Coalescing Filters

0,01 micron element

| Port size | Description | Order Code |
|-----------|-----------------------------|--------------------|
| G1/4 | Standard with manual drain | P3SFA12CPPN |
| G1/4 | Metal bowl with sight glass | P3SFA12CSPN |
| G3/8 | Standard with manual drain | P3SFA13CPPN |
| G3/8 | Metal bowl with sight glass | P3SFA13CSPN |

Adsorber Filters

| Port size | Description | Order Code |
|-----------|-----------------------------|--------------------|
| G1/4 | Standard with manual drain | P3SFA12APPN |
| G1/4 | Metal bowl with sight glass | P3SFA12ASPN |
| G3/8 | Standard with manual drain | P3SFA13APPN |
| G3/8 | Metal bowl with sight glass | P3SFA13ASPN |

Lubricators

| Port size | Description | Order Code |
|-----------|------------------------------------|--------------------|
| G1/4 | Standard | P3SLA12LPNN |
| G1/4 | Closed metal bowl with sight glass | P3SLA12LSNN |
| G3/8 | Standard | P3SLA13LPNN |
| G3/8 | Closed metal bowl with sight glass | P3SLA13LSNN |



PDE2600PNUK

Parker Pneumatic

P3S - Air Preparation System

Filter + Regulator + Lubricator combination

(wall bracket mount and gauge included)

| Port size | Description | Order Code |
|-----------|--|-----------------------|
| G1/4 | Standard with 5μ element, manual drain | P3SCB12PEPGLNW |
| G1/4 | Semi auto drain 5μ element, manual drain | P3SCB12PESGLNW |
| G1/4 | Auto drain 5μ element, manual drain | P3SCB12PEAGLNW |
| G3/8 | Standard with 5μ element, manual drain | P3SCB13PEPGLNW |
| G3/8 | Semi auto drain 5μ element, manual drain | P3SCB13PESGLNW |
| G3/8 | Auto drain 5μ element, manual drain | P3SCB13PEAGLNW |

Filter/Regulators

4, 8 & 16 bar (40 micron options available)

| Port size | Description | Order Code |
|-----------|--|-----------------------|
| G1/4 | Standard with 5μ element | P3SEA12EPPBNNN |
| G1/4 | Semi auto drain 5μ element | P3SEA12EPSBNNN |
| G1/4 | Auto drain 5μ element | P3SEA12EPABNNN |
| G1/4 | Metal bowl with sight glass 5μ element | P3SEA12ESPGLNW |
| G3/8 | Standard with 5μ element | P3SEA13EPPBNNN |
| G3/8 | Semi auto drain 5μ element | P3SEA13EPSBNNN |
| G3/8 | Auto drain 5μ element | P3SEA13EPABNNN |
| G3/8 | Metal bowl with sight glass 5μ element | P3SEA13ESPGLNW |

Proportional Pressure Regulator

| Port size | Description | Order Code |
|-----------|---|-----------------------|
| G1/4 | Normally closed, Control Signal 0-10V Pressure Range 0-10 bar | P3SPA12AD2VA2A |
| G1/4 | Normally closed, Control Signal 4-20mA Pressure Range 0-10 bar | P3SPA12AD2AA2A |
| G1/4 | Normally open / fail safe Control Signal 0-10V Pressure Range 0-10 bar | P3SPA12ED2VA2A |
| G1/4 | Normally open / fail safe Control Signal 4-20mA Pressure Range 0-10 bar | P3SPA12ED2AA2A |
| G3/8 | Normally closed, Control Signal 0-10V Pressure Range 0-10 bar | P3SPA13AD2VA2A |
| G3/8 | Normally closed, Control Signal 4-20mA Pressure Range 0-10 bar | P3SPA13AD2AA2A |
| G3/8 | Normally open / fail safe Control Signal 0-10V Pressure Range 0-10 bar | P3SPA13ED2VA2A |
| G3/8 | Normally open / fail safe Control Signal 4-20mA Pressure Range 0-10 bar | P3SPA13ED2AA2A |

Filter/Regulator + Lubricator combination

(wall bracket mount and gauge included)

| Port size | Description | Order Code |
|-----------|--|-----------------------|
| G1/4 | Standard with 5μ element, manual drain | P3SCA12PEPGLNW |
| G1/4 | Semi auto drain 5μ element | P3SCA12PESGLNW |
| G1/4 | Auto drain 5μ element | P3SCA12PEAGLNW |
| G1/4 | Metal bowl with sight glass 5μ element | P3SCA12SEPGLNW |
| G3/8 | Standard with 5μ element, manual drain | P3SCA13PEPGLNW |
| G3/8 | Semi auto drain 5μ element | P3SCA13PESGLNW |
| G3/8 | Auto drain 5μ element | P3SCA13PEAGLNW |
| G3/8 | Metal bowl with sight glass 5μ element | P3SCA13SEPGLNW |

Slider Valve

| Port size | Description | Order Code |
|-----------|--|-------------------|
| G1/4 | 3/2 way shut off valve 3-fold lockable | P3SVA12LSN |
| G3/8 | 3/2 way shut off valve 3-fold lockable | P3SVA13LSN |

Soft Start Valve & Dump Valves

| Port size | Description | Order Code |
|-----------|---|-----------------------|
| G1/4 | Soft Start Valve | P3SSA12Y0N |
| G1/4 | Dump Valve Air Pilot | P3SDA12PPN |
| G1/4 | Solenoid Pilot 24V = | P3SDA12SCNB2CN |
| G1/4 | Solenoid Operated (solenoid not included) | P3SDA12SCN0000 |
| G3/8 | Soft Start Valve | P3SSA13Y0N |
| G3/8 | Dump Valve Air Pilot | P3SDA13PPN |
| G3/8 | Solenoid Pilot 24V = | P3SDA13SCNB2CN |
| G3/8 | Solenoid Operated (solenoid not included) | P3SDA13SCN0000 |

Accessories

| Description | Order Code |
|---|------------------|
| Wall Mount Kit - standard | P3SKA00MW |
| Wall Mount Kit for common p1 regulator | P3SKA00MB |
| Assembly Kit | P3SKA00CB |
| Branch manifold, 3 x G1/8, 1 x G1/4 for pressure switch incl. assembly material | P3SMA1V0N |
| Gauge Ø 40, 0-10 bar, G1/8 | KZ8813-00 |
| Lock for tamperproof regulator | P3XKA00AS |

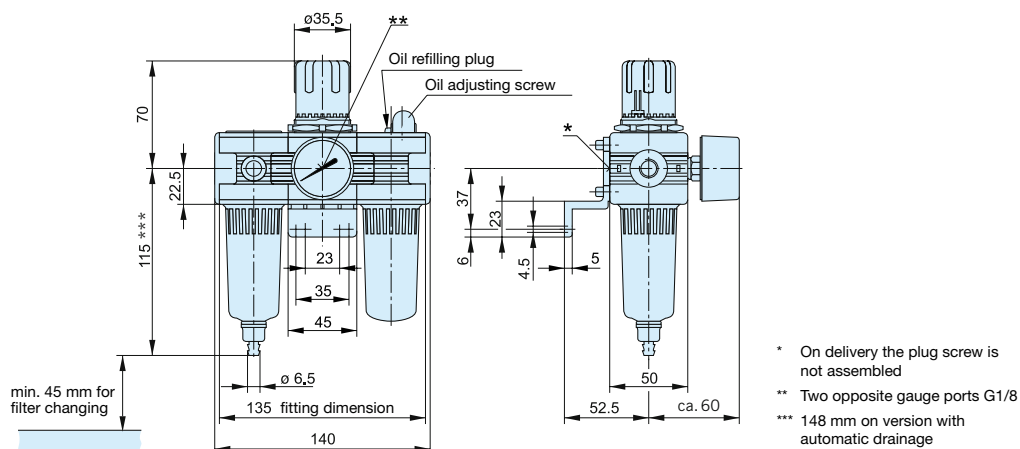


PDE2600PNUK
Parker Pneumatic

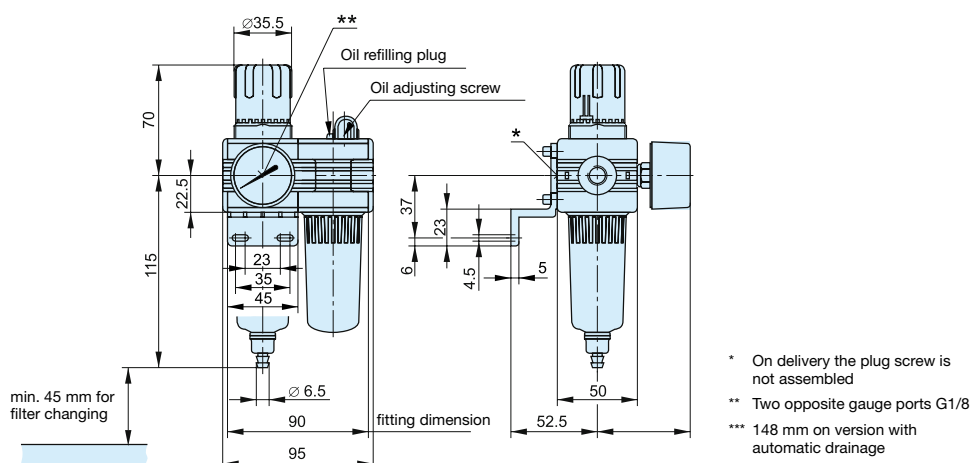
P3S - Air Preparation System

Dimensions (mm)

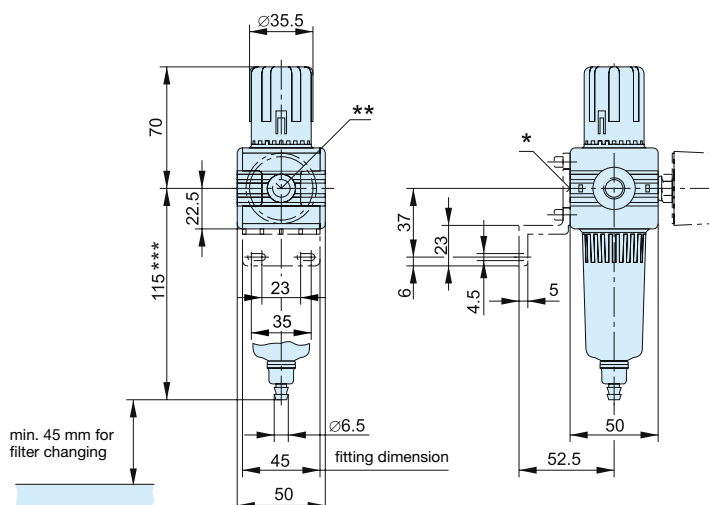
Filter + Regulator + Lubricator combination



Filter/Regulator + Lubricator combination

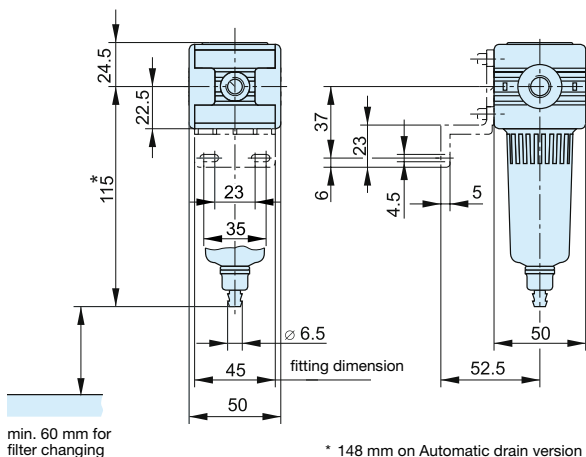


Filter/Regulator

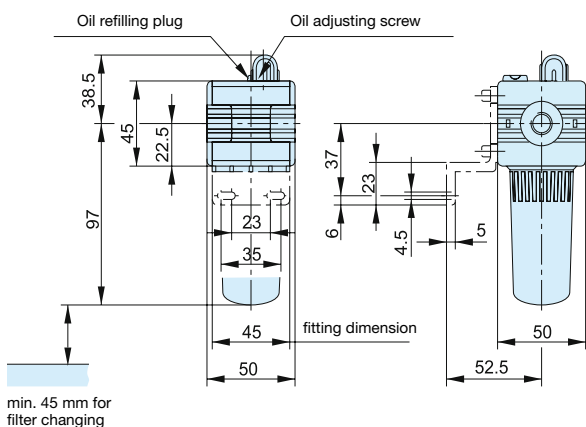


Dimensions (mm)

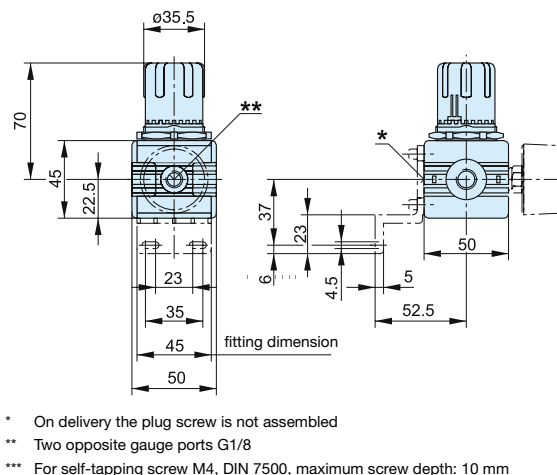
Filter



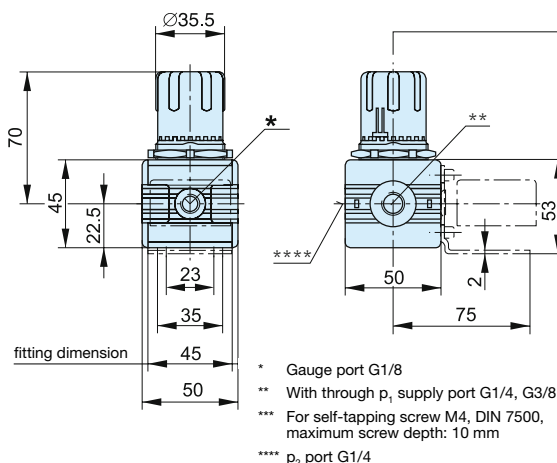
Lubricator



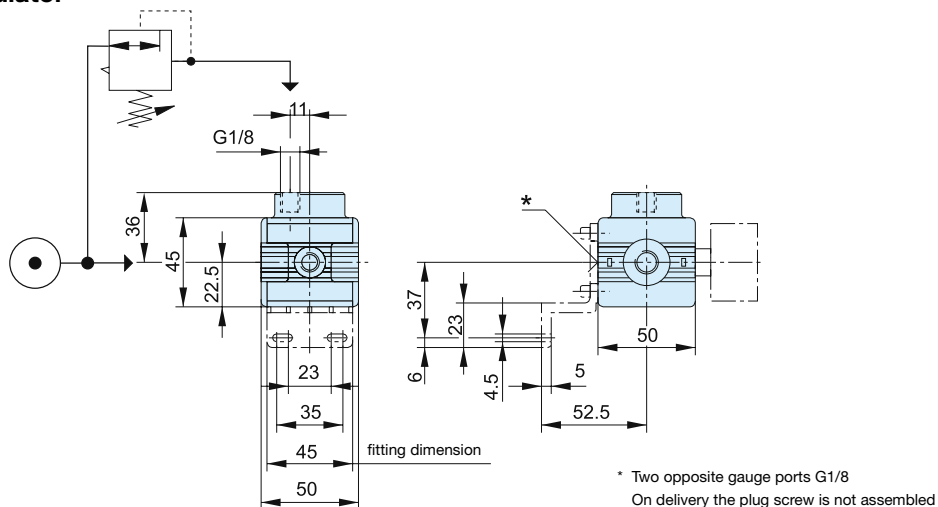
Regulator



Common - P1 Regulator



Pilot Operated Regulator

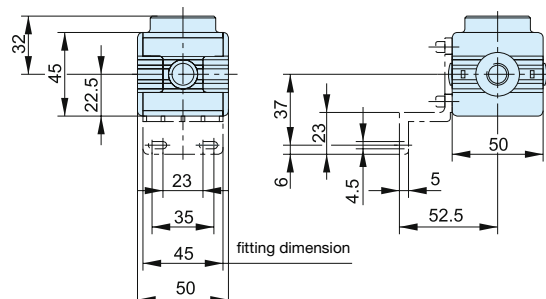


PDE2600PNUK
Parker Pneumatic

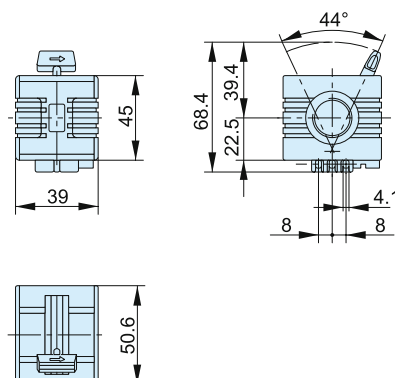
P3S - Air Preparation System

Dimensions (mm)

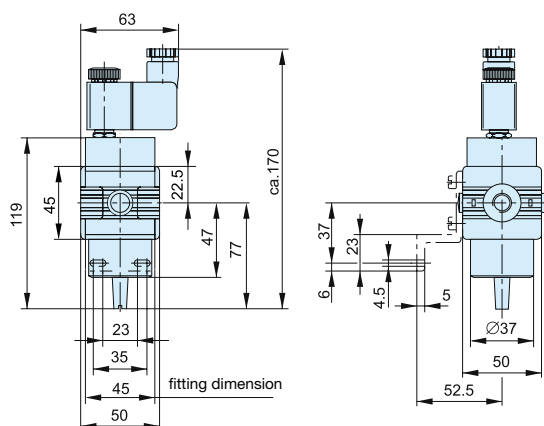
Start Valve



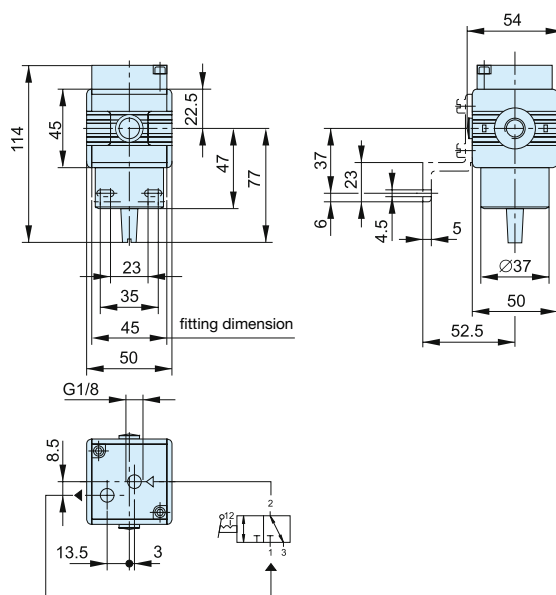
Slider Valve



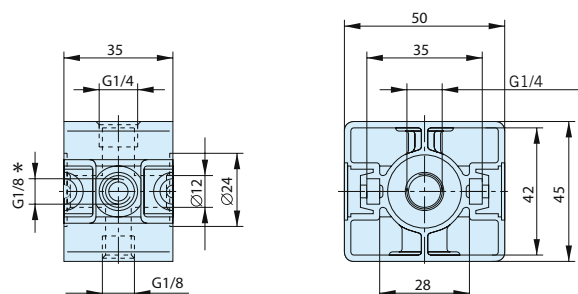
Remote Operated Dump Valve (electrically actuated)



Remote Operated Dump Valve (pneumatically actuated)



Branch Manifold



* G1/8 thread on both sides

