

HM 325 | HM 375 | HM 380 | HM 400



As reliable classic machines, the HM 3xx/HM 400 series unites all the outstanding properties of a production crimper. They are compact, powerful and make ergonomic working possible. Combining a convincingly solid construction with a high level of user friendliness, and long service life, the HM 3xx/HM 400 set a new standard for quality and cost effectiveness.



HM 325 | HM 375 | HM 380



HM 400

Engineered solutions using quality components

- Smaller machine increases ergonomics
- HiLo cylinder - Maximum efficiency causing less heat
- Noiseless high-quality pump
- Full length of fittings crimped in one stroke increases product quality and production efficiency
- Lateral reinforcement optimizes overall tolerance

Fixed 6- o'clock die

- Workpiece does not move, making it easier to position laterally
- Increases productivity, driving up profitability
- Reduces risk for injuries

Slide bearing technology

- No greasing improves cleanliness of machine and prolongs its lifetime
- Maximum productivity with very low maintenance costs
- Flaking cannot stick in grease, no risk of prematurely damaging the crimping head
- End product can be used in sanitary applications without cleaning
- 20% more capability for crimping stronger or more difficult couplings versus our competition's equivalent crimpers
- Consistently accurate crimp result

CE compliant

We reserve the right to make technical changes without notice. Options are machine parts that can only be ordered while buying the machine.

Package

Pressure Force Monitoring

Accessories



QDS 239 B



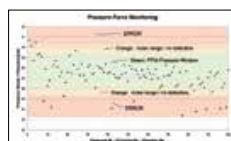
QDC 239.5

Package = Machine
+ PB Ø 17, 20, 24, 28,
32, 40, 44, 50, 57, 71
+ 237.239.2L2
+ QDC 239.5
+ QDS 239 B
+ Control C.2



TA (A)

PFM – Standard on all machines with Control C.2



UDL included with Control C.2

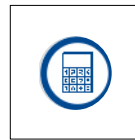
Quality-enhancing option for series production. With PFM, the upper and lower pressure limits can be set by adjusting the tolerance values obtained from test pressing. Pressures outside these limits are output as errors. It is possible to let the machine switch off at a fixed upper or lower limit, thereby obtaining a higher process safety.



Multistep



Crimping by Pressure



Industrial calculator



PTS



LUF

Technical Data



HM 325 | HM 375 | HM 380

HM 400

Additional Information



The compact, narrow and ergonomic construction makes working on both sides possible.



The fixed 6- o'clock die makes safe and low-force positioning of the workpiece possible, which improves cost effectiveness as well as safety.






With the Barcode Scanner you can scan articles quickly and efficiently.

Technical data	HM 325	HM 375	HM 380	HM 400
Crimp force (kN / Ton)	2 800/280	3 150/315	3 400/340	3 750/375
No grease: 20% less friction	✓	✓	✓	✓
Control	Control C.2 + Touch	Control C.2 + Touch	Control C.2 + Touch	Control C.2 + Touch
SAE R 15/4SH 1 piece fitting*	2"	3"	3"	3"
SAE R 15/4SH 2 piece fitting*	2"	2½"	3"	3"
Industrial*	4"	4"	4"	6"
90° Elbows*	3"	3"	3"	3"
Max. Crimp range**	165 mm**	165 mm**	165 mm**	190 mm**
Opening	+70 mm	+70 mm	+70 mm	+130 mm
Opening without dies	215 mm	215 mm	215 mm	300 mm
Master dies length (mm)	126 mm	126 mm	126 mm	150 mm
Type of dies	237 L/239-xx	237 L/239-xx	237 L/239-xx	554/239-xx
Speed (mm/sec)				
Close	23	23	23	18
Crimp	1,4	1,4	1,3	1,4
Open	33	33	33	20
Noise level	69 dBA	62 dBA	62 dBA	62 dBA
Drive	4 kW 3 VAC	4 kW 3 VAC	4 kW 3 VAC	5,5 kW 3 VAC
Oil	100 L	100 L	100 L	260 L
L x W x H (mm)	1 200 x 600 x 1 700	1 200 x 600 x 1 700	1 200 x 600 x 1 700	630 x 1500 x 1 800
Weight	750 kg	750 kg	750 kg	1400 kg
CGS (Conicity Guard System)	✓	✓	✓	—
HIDS (High Pressure Pump Dynamic Suction)	✓	✓	✓	✓

* According to the fitting.

** With master dies.

Type of dies	Type of dies	Type of dies
 239-xx-Ø-yy	 237 L	 554
Ø mm	mm	Ø mm
6,8	50	57
9	50	62
10	50	67
12	65	71
14	65	74
16	65	78
17	65	84
19	65	86
20	65	90
22	65	96
24	65	103
26	65	106
28	80	111
30	80	116
31	80	121
32	80	126
34	80	131
36	80	136
38	80	146
39	80	150
40	80	
44	80	
47	100	
50	100	
54	100	
57	100	
62	100	

Accessories

Control C.2: Accessories



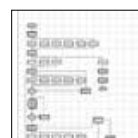
GDS 239 S



GDS 239 C



GDS 239 R



Customized software



Electronic caliper



Calibration mandrel



Barcode scanner



TA (A)



OCS



SHS


Oil Cooler
OC HM xxx


PS Double foot pedal



RFID



ULS



807.2



DMS